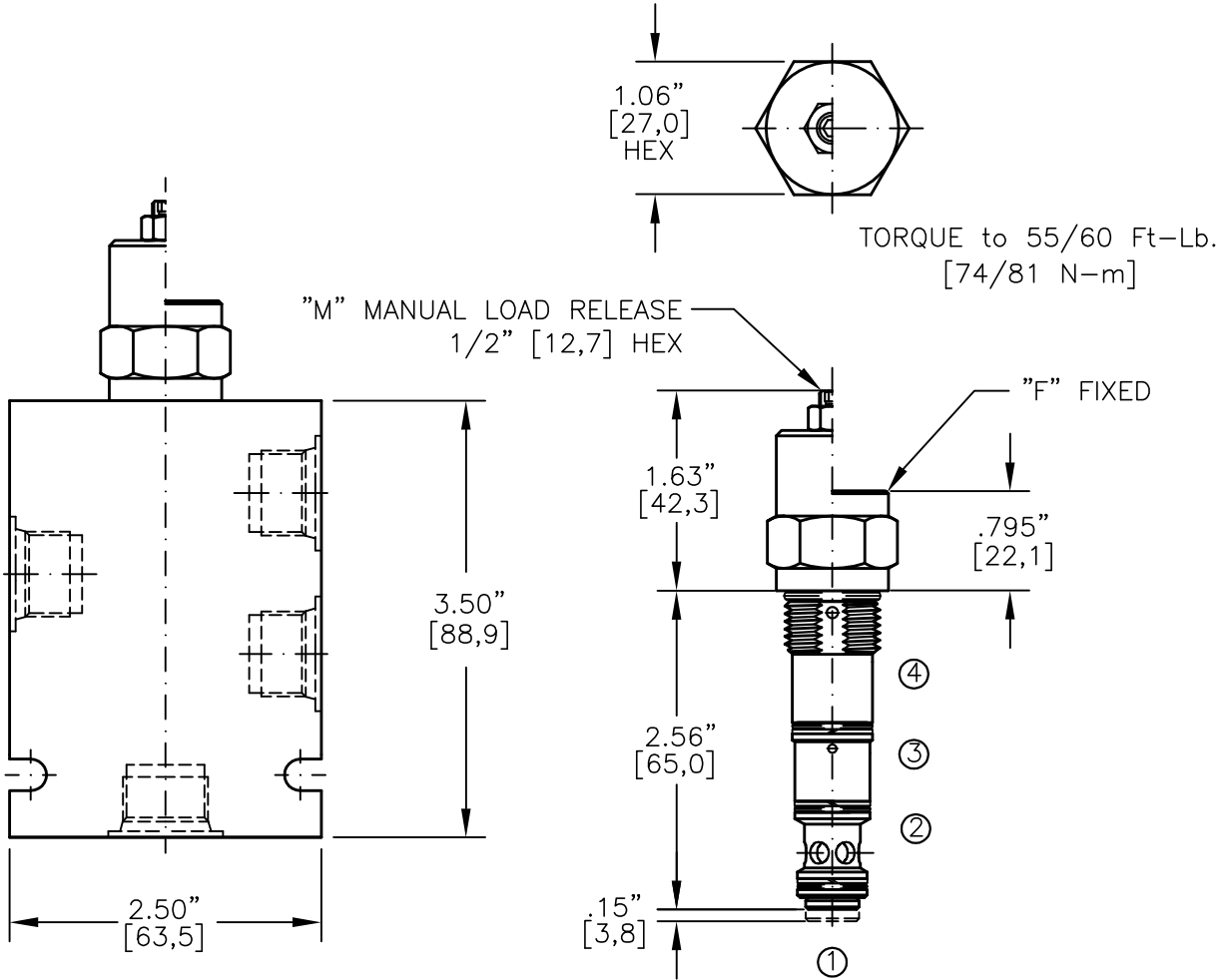
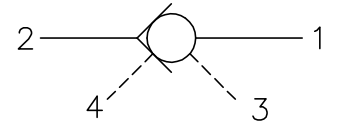




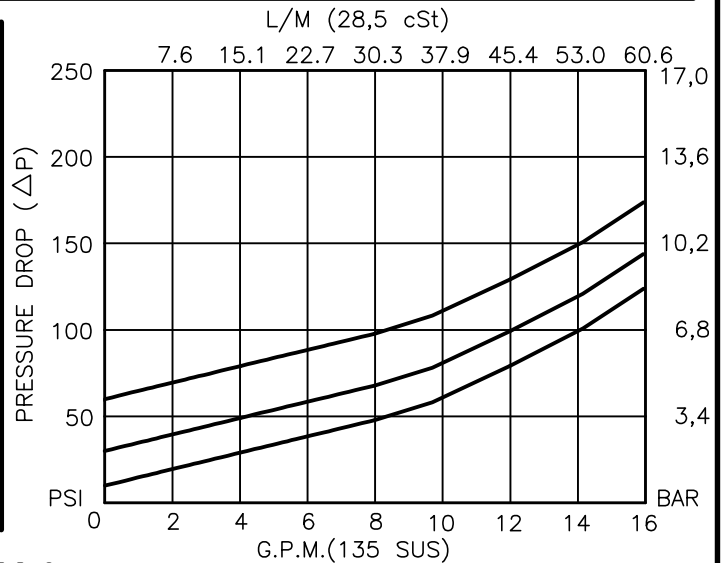
# PILOT OPERATED CHECK VENTED POPPET TYPE, PILOT TO OPEN, 3 TO 1 PILOT RATIO.



NOTE: CAVITY BOTTOM HOLE MUST ALLOW FOR POPPET EXTENSION (.563 DIA.). FOR ALUMINUM OR STEEL VALVE HOUSING CONFIGURATIONS SEE PAGE 0-042-1.

## POCV-10-X-X-X-XXX

- BASIC
- SIZE  
10 = 7/8"-14 UNF
- SEALS  
N = BUNA "N"  
V = VITON
- ADJUSTMENT  
F = FIXED  
M = MANUAL RELEASE
- CRACK PRESSURE  
010 = 10 PSI  
030 = 30 PSI  
060 = 60 PSI
- PORTS  
0 = CARTRIDGE ONLY  
02BX = G 1/4" BSPP  
03BX = G 3/8" BSPP  
06TX = SAE - #6  
08TX = SAE - #8
- "A" - ALUM. HOUSING  
"S" - STEEL HOUSING





## PILOT OPERATED CHECK VENTED POPPET TYPE, PILOT TO OPEN, 3 TO 1 PILOT RATIO.

### DESCRIPTION

This unit is a SCREW IN, cartridge type, guided poppet, hydraulic pilot operated check vented valve, for use as a blocking or load holding device for high pressure applications.

### OPERATIONS

This valve allows free flow from port 2 to port 1 and blocks flow from port 1 to port 2 or holding a load. Flow will be allowed from port 1 to port 2 when pressure is applied to port 4.

This pilot operated check valve has a 3 to 1 pilot ratio, meaning that it takes at least one-third of the load pressure held at port 1 that is required at port 4 to open the valve.

### FEATURES AND BENEFITS

A low friction seal on pilot piston is standard.

A separate heavy spring assures fast return of the pilot piston for a very quick, reliable and positive valve re-seat.

Optional screw type manual load release is available.

All external carbon steel parts are plated for longer life against the elements.

All cartridge valves are 100% functionally tested.

Industry common cavity.

### SPECIFICATIONS

OPERATING PRESSURE: 5,000 PSI [350 Bar]

PROOF PRESSURE: 10,000 PSI [700 Bar]

FLOW: 16.0 GPM [60.6 l/m] nominal. See performance chart.

PILOT RATIO: 3 TO 1

INTERNAL LEAKAGE: 5 drops per minute maximum @ 5,000 PSI [350 Bar]

VALVE HOUSINGS: 2500 PSI [175 Bar] = Aluminum - Anodized.

5000 PSI [350 Bar] = Steel - Unplated.

OPERATING TEMPERATURE: -40° to +250° F. [-40° to +120° C.]

OPERATING MEDIA: All general purpose hydraulic fluids such as

MIL-H-5606, SAE-#10, SAE-#20, etc.

INSTALLATION: No restrictions.

SEAL KIT: SKN-1042 Buna "N"

SKV-1042 Viton

WEIGHT: .40 lbs [.21 klg] cartridge only.

VALVE CAVITY: #C1040, See Page 0-042.0.